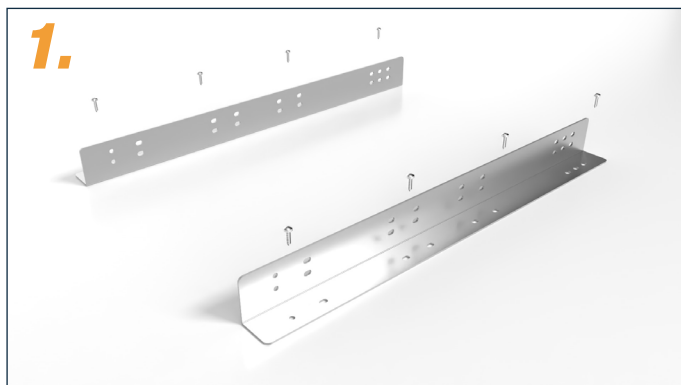


# Assembly instruction

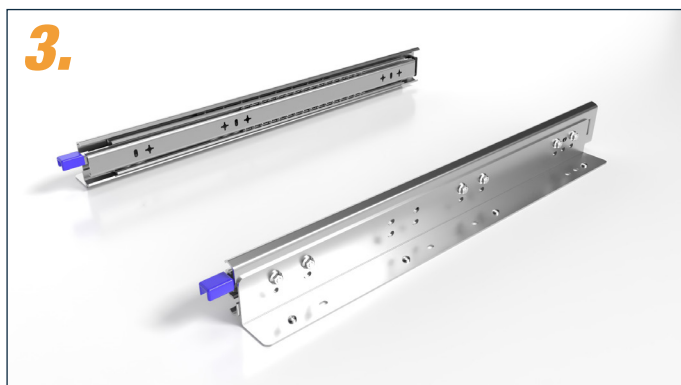
Mounting bracket for floor mounting for heavy-duty drawer slides up to 160 kg



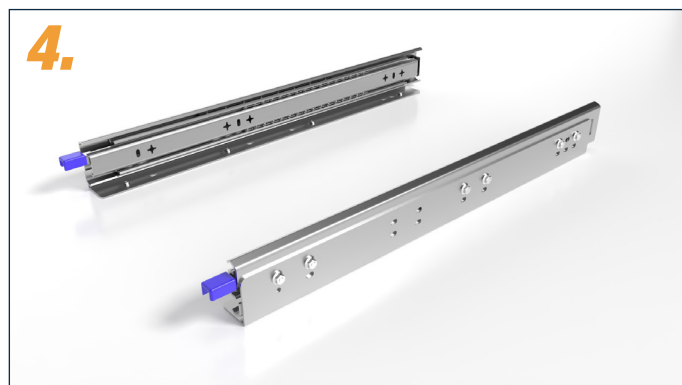
1. Screw the mounting brackets to the floor.  
For example with flat head screw 4x14 (available in our online shop).



2. Screw heavy-duty drawer slides to mounting brackets with M5x10 countersunk screw and M5 nut with flange. (supplied)



3. After assembly, the inner rail is retracted again. Mounting brackets can point outwards.



4. Alternatively, the mounting brackets can also point inwards.



5. Pull-outs from 800 mm require a set consisting of 4 brackets. (Exception 755013-800lock)



6. Further information and a suitable installation video can be found on our website [www.multislides.eu](http://www.multislides.eu)